

Cleaning guns with quick coupling

Quick connection

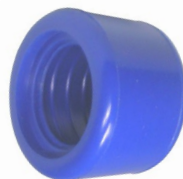
The guns can be supplied with mounted quick-release coupling, with or without protection. Now it is possible to exchange lances easily.



We have lances suitable for different purposes; for foaming, disinfecting, rinsing and available in different sizes.



COUPL1/2-F



COPROT1-B



COUPL1/2-F-B

Technical specifications

- Maximum pressure 24 bar (AKNLCP2-B: 12 bar)
- Maximum temperature 95 °C (AKNLCP2-B: 50 °C)
- Large bore for excellent foam quality
- Connection 1/2" BSP female
- Automatic switch-off when the trigger is released
- Fitted with stainless steel quick-release coupling with rubber protection (COUPL1/2-F-B)
- Easy changing of different lances for rinsing, disinfecting and foaming
- Strong EPDM protection
- EPDM (FDA) seals for brass, chrome-plated brass (KLMLCP2-B, AKCLCP2-B) and plastic (AKNLCP2-B)
- VITON (FDA) seals for stainless steel (AKRLCP2-B)

A swivel coupling on a gun improves user-friendliness and extends the life of the hose. See the "Swivel couplings" page for more information.

Available models:



AKCLCP2-B

Chrome-plated brass gun with quick-release coupling and EPDM protection

AKRLCP2-B

St. st. (AISI 316) gun with quick-release coupling and EPDM protection

KLMLCP2-B

Brass gun with quick-release coupling and EPDM protection



AKNLCP2-B

Plastic (PA66) gun with quick-release coupling and EPDM protection

All article numbers in **bold** are available from stock.